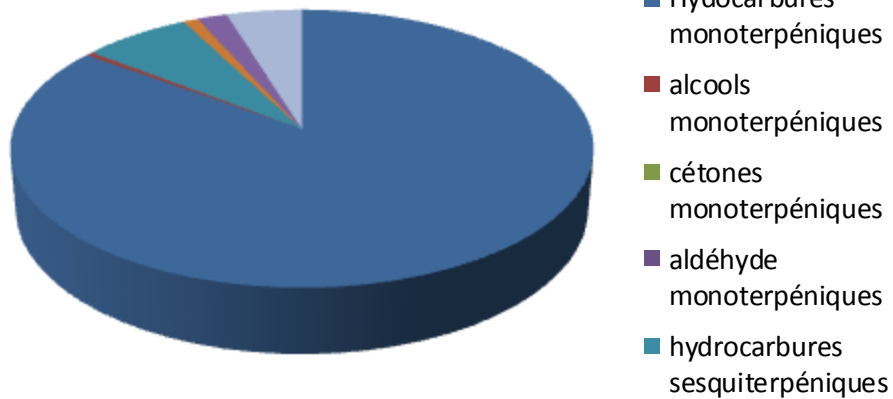


Date	:	16/05/2013
Référence produit / Product reference	:	FLE028
Huile essentielle de / Essential oil of	:	CYPRES / CYPRESS
Numéro de lot / Lot Number	:	A030513F
Densité à 20°C (g/cm ³) / Density to 20°C (g/cm ³)	:	0.865
Indice de réfraction / Refractive index	:	1.4726
Pouvoir rotatoire à 20°C / Optical rotation to 20°C	:	19
Mode de culture / Culture mode	:	SAUVAGE / WILD
Pays / Country	:	FRANCE
Date de production / Production date	:	03/2013
D.L.U. / Shelf life	:	04/2018
Mode d'extraction / Extraction mode	:	Distillation à la vapeur / Steam distillation
% Bio / % Organic	:	100% Bio / 100% Organic
Nom Latin / Latin Name	:	Cupressus sempervirens
Parties utilisées / Used Parts	:	Rameaux / Branches



Molécule	%
tricyclene	0.251
alpha-thujene	0.541
alpha-pinene	60.416
fenchene	0.544
camphene	0.286
sabinene	1.139
beta-pinene	1.479
myrcene	2.35
delta-3-carene	12.446
alpha-terpinene	0.194
para-cymene	0.405
limonene *	2.780
1,8-cineole (Eucalyptol)	0.093
(E)-beta-ocimene	0.079
gamma-terpinene	0.303
terpinolene isomere	0.099
terpinolene	2.253
para-cymenene	0.102
linalol *	0.039
camphre	0.051
borneol	0.043

Molécule	%
terpinene-4-ol	0.349
alpha-terpineol	0.06
thymol methyl ether	1.493
methyl carvacrol ether	0.024
acetate de bornyle	0.427
acetate de 4-terpenyle	0.170
acetate d'alpha terpenyle + alpha cubebene	1.460
alpha-copaene	0.131
beta-elemene	0.148
longifolene	0.239
alpha-cedrene	0.654
beta-caryophyllene	0.593
beta-cedrene	0.216
beta-copaene	0.088
thujopsene	0.078
alpha-humulene	0.380
gamma-muurolene	0.317
germacrene D	2.961
beta-selinene	0.065
alpha-muurolene	0.340
alaskene	0.128

Molécule	%
gamma-cadinene	0.154
delta-cadinene	0.535
cedrol	0.951
pimaradiene	0.028
oxyde de manool	0.056
abietatriene	0.115
totalol	0.064
Total	98.117

* = Substance(s) allergène(s) / allergen(s)

** = Substance(s) classée(s) CMR / Substance(s) classified as CMR