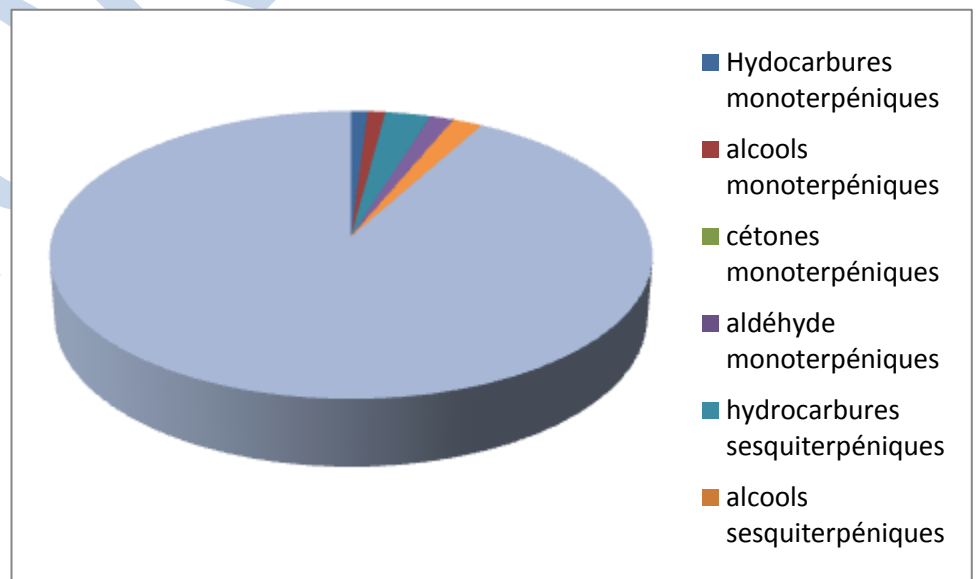


Date	:	05/06/2012
Huile essentielle de / Essential oil of	:	Cannelle ecorce sauvage / Cinnamon Bark
Numéro de lot / Lot Number	:	FLE101A040612MD
Densité à 20°C (g/cm ³) / Density to 20°C (g/cm ³)	:	1.011
Indice de réfraction / Refractive index	:	1.5745
Pouvoir rotatoire à 20°C / Optical rotation to 20°C	:	-0.9
Mode de culture / Culture mode	:	Sauvage / Wild
Pays / Country	:	Madagascar
Année de production / Production year	:	2011
Mode d'extraction / Extraction mode	:	Distillation à la vapeur / Steam distillation
% Bio / % Organic	:	100% Bio / 100% Organic
Nom Latin / Latin Name	:	Cinnamomum zeylanicum
Parties utilisées / Used Parts	:	Ecorce



Molécule	%
alpha-pinene + alpha-thujene	1.220
beta-pinene	0.300
camphene	0.360
sabinene	0.090
myrcene	0.15
alpha-phellandrene	1.450
alpha-terpinene	1.020
limonene*	0.910
beta-phellandrene	4.11
1,8-cineole (Eucalyptol)	0.170
cis-beta-ocimene	0.090
gamma-terpinene + trans-beta-ocimene	0.400
para-cymene	1.960
terpinolene	0.16
alpha-copaene	0.330
Camphre	0.060
linalol *	2.24
terpinene-4-ol	0.51
beta-caryophyllene	3.16
alpha-humulene	0.580
alpha-terpineol	0.600

Molécule	%
safrole **	< 0.05
trans cinnamaldehyde *	60.86
cinnamyl acetate + eugenol *	12.68
alcool cinnamique	0.9
2-methoxy cinnamaldehyde	0.690
benzyl benzoate *	1.530
Total	96.530

* = Substance(s) allergène(s) / allergen(s)

** = Substance(s) classée(s) CMR / Substance(s) classified as CMR

