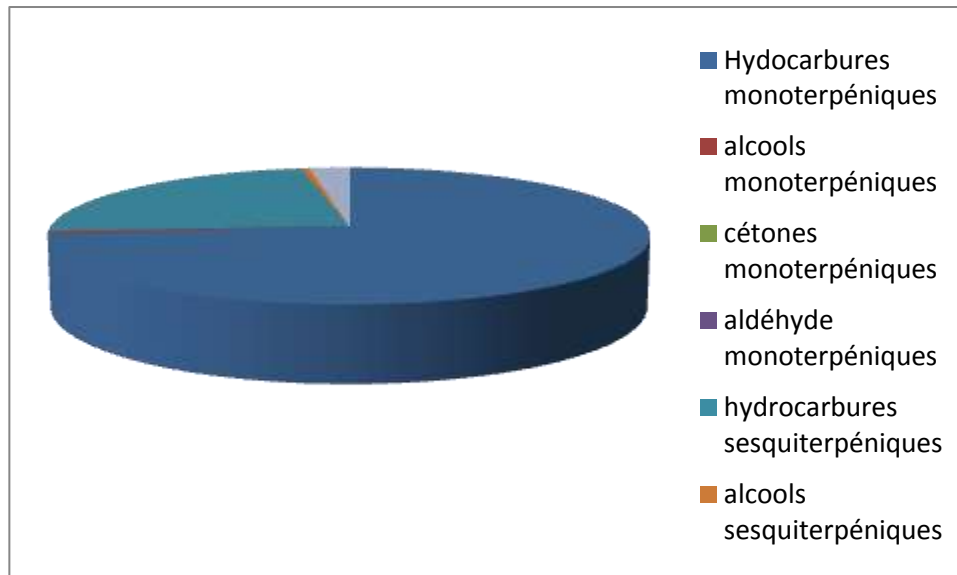


Date	:	04/04/2012
Huile essentielle de / Essential oil of	:	Poivre noir / Black pepper
Numéro de lot / Lot Number	:	FLE122C020312SL
Densité à 20°C (g/cm ³) / Density to 20°C (g/cm ³)	:	0.867
Indice de réfraction / Refractive index	:	1.4782
Pouvoir rotatoire à 20°C / Optical rotation to 20°C	:	-15
Mode de culture / Culture mode	:	Cultivé / Cultivated
Pays / Country	:	SRI LANKA
Année de production / Production year	:	2011
Mode d'extraction / Extraction mode	:	Distillation à la vapeur / Steam distillation
% Bio / % Organic	:	100% Bio / 100% Organic
Nom Latin / Latin Name	:	Piper nigrum L.
Parties utilisées / Used Parts	:	Fruit



Molécule	%
alpha-pinene	15.900
alpha-thuyene	1.660
camphene	0.440
beta-pinene	10.9
sabinene	13.300
pinadiene	0.020
delta-3-carene	8.680
beta-myrcene	2.31
alpha-phellandrene	2.060
psi-limonene	0.050
o-Cymene	0.010
alpha-terpinene	0.260
LIMONENE	14.330
beta-phellandrene	2.2
1,8-cineole	0.120
cis-beta-ocimene	0.030
terpene N.I	0.03
gamma-terpinene	0.43
trans-beta-ocimene	0.300
para-cymene	0.280
Isoterpinolene	0.500



Molécule	%
alpha-cubebene	0.15
trans-thuyanol	0.13
elemene isomere	0.06
delta-elemene	1.22
bicycloelemene	0.020
cyclosativene	0.070
alpha-copaene	2.370
epoxyde terpenique	0.010
alpha-gurjunene	0.070
linalol	0.330
beta-1 cubebene	0.200
cis-thuyanol	0.080
trans-para-menth-2-en-1-ol	0.030
epsilon-cadinene	0.030
alpha-guaiene	0.050
beta-elemene	0.200
beta-cubebene	0.080
beta-caryophyllene	15.050
aromadendrene	0.080
cis-para-menth-2-en-1-ol	0.030
cadina-3,5-diène	0.050

Molécule	%
myrtenal	0.020
E-beta- farnesene	0.060
zonarène	0.030
sesquiterpene	0.030
alpha-humulene	0.740
gamma-selinene	0.020
gamma-muurolene	0.070
alpha-terpineol	0.100
calarene isomere	0.020
ledene	0.030
gurjunene isomere	0.130
menthadienol isomere	0.020
germacrene D	0.410
alpha-zingiberene	0.050
cubenene	0.060
beta-bisabolene	0.500
alpha-muurolene	0.100
beta-selinene	0.090
alpha-selinene	0.11
bicyclogermacrene	0.440
alpha-farnesene	0.060

Molécule	%
delta-cadinene	0.980
gamma-cadinene	0.030
cis-alpha-bisabolene	0.040
cadina-1,4-diene	0.060
cis-sabinol	0.020
calamenene	0.04
epi-cubebol	0.1
epoxy-sesquiterpenique	0.020
cubebol	0.180
oxyde d'isocaryophyllene	0.030
oxyde de caryophyllene	0.17
nerolidol	0.060
cubenol	0.03
sesquiterpenol	0.020
viridiflorol	0.020
sesquiterpenol	0.030
eugenol	0.020
elemol isomere	0.030
alpha-muurolol	0.070
cadinol isomere	0.290
spathulenol	0.060

Molécule	%
sesquiterpenol	0.020
sesquiterpenol	0.020
isospathulenol	0.080
Total	99.630

